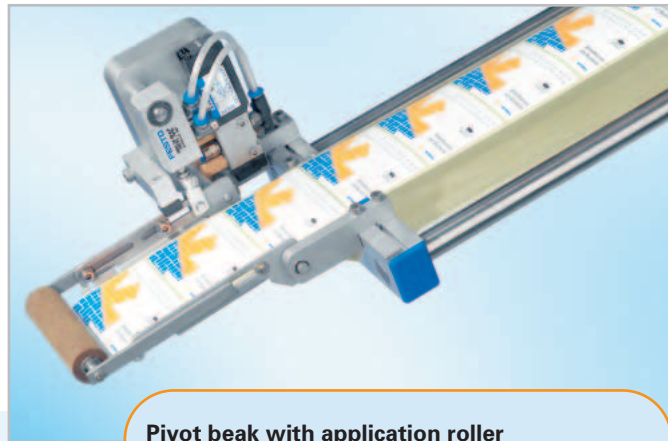




Rigid beak with application roller
For linear labelling, where the sprung-loaded application roller applies the labels onto the product.



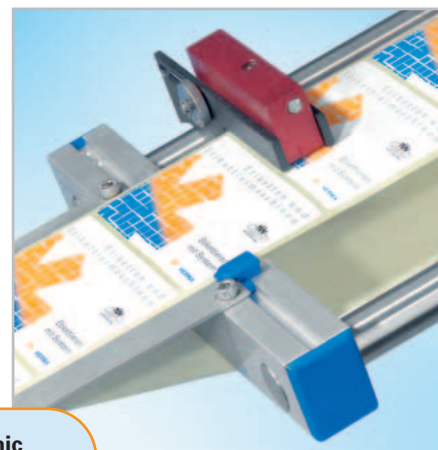
Pivot beak with application roller
The solution for linear labelling of objects with varying heights or uneven shapes.

HERMA dispensing systems – always the perfect fit

Labeller HERMA 400 – Labelling solutions based on a modular system

For any label application we have a suitable solution: The HERMA labelling system is built upon a well thought out and proven expandable platform.

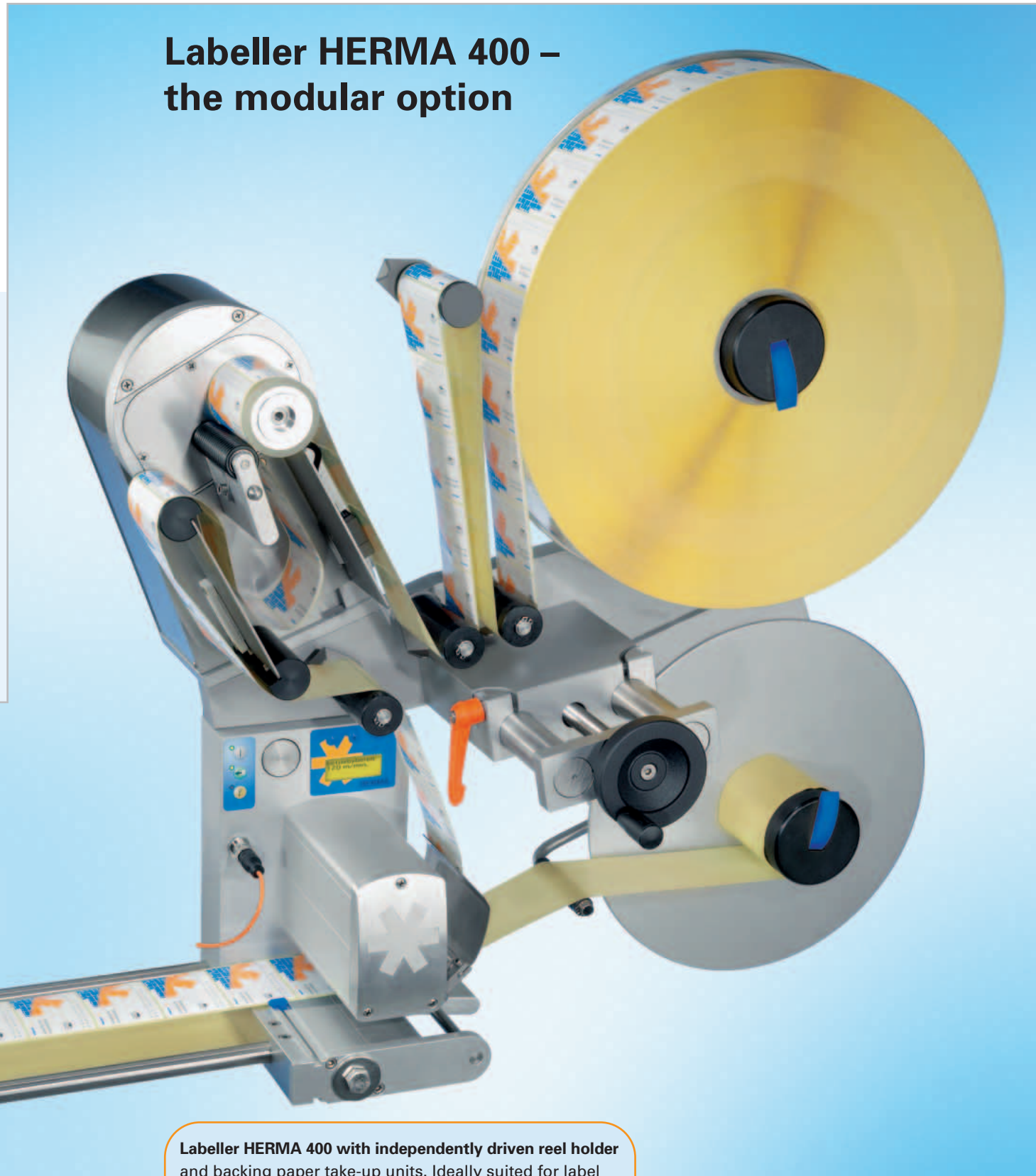
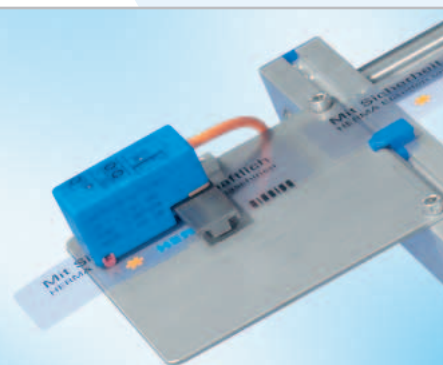
- Available as left-hand and right-hand versions – perfect and flexible to use
- Labelling speed can be synchronized with the product speed
- Widths are available in increments of 80 mm, up to a label tape width of 320 mm as standard



HERMA label detection – fast, easy, precise

Our non-contact **optoelectronic sensing unit** quickly and easily adapts to various light transmitting properties.

With the **HERMA sensor FS01** we can offer an extremely fast and powerful label sensing system. The FS01 sensor is especially suitable for use with transparent labels.



Labeller HERMA 400 – the modular option

Labeller HERMA 400 with independently driven reel holder and backing paper take-up units. Ideally suited for label reels with an outer diameter of up to 400 mm and a core diameter of 3"/76 mm. The labelling speed can be up to 80 m/min – up to 160 m/min when fitted with the optional loop-type unwinder.

suitable for large reels

PLC connection

automatic speed synchronization



Hot-foil printer
The ideal solution if you require high-quality codes etc. in a wide range of colours.



Thermal transfer printer
The versatile system developed for printing variable label information such as text, real-time data, bar codes, and graphics.

HERMA printing systems – simply integrate the printer of your choice

Labeller HERMA 400 – the building block concept

Can be easily integrated:

- into existing production lines
- into tailor-made labelling machines built to your specific requirements
- with PLCs



HERMA modular pedestal system – rigid mounting for all applications

Mounting pedestals can be easily adjusted in all planes and incorporate simple adjustment of the angle of label application.



The HERMA universal pedestal
Convenient mounting for top, side or bottom labelling. Wheels are an option.

third party printers

easy to integrate

easy to expand

Labeller HERMA 400 – compact, modular and universal



Labeller HERMA 400 with reel holder for label reels with an outer diameter of up to 300 mm and a core of 3"/76 mm. The maximum labelling speed is 40 m/min.

The advantages at a glance

- Control integrated in the applicator – no separate control box required
- For power supplies of 230 volts or 115 volts
- Proven in industrial environments
- Optimum integration into production lines
- Wide selection of bolt-on modular accessories

for transparent labels

EMC tested

CE tested



DIN EN ISO 14001



DIN EN ISO 9001:2000

HERMA – the art of labelling

HERMA quality and know-how are in demand all over the world.

And here's why:

- HERMA engineers provide the perfect answer to all of our customers' labelling problems, right down to the very last detail.
- We adapt our systems quickly and rationally in response to your ever-changing technical requirements.
- Our customer service points that are located all over Europe are just one of our many strengths.

No matter how complex your particular labelling task – don't hesitate to come to us for advice. Together we'll find a way. Of that you can be sure.

Please pay a visit to our Internet sites:
www.herma.de
www.herma.co.uk

The innovative HERMA 362 M series

The new dimension for dealing with the tough challenges of two-side labelling. These machines excel by being highly economical, precise, powerful and operator-friendly. Due to its unique modular design the HERMA 362 M range facilitates quick and simple change-overs and can be upgraded / tailored to suit the specific and ever-changing requirements of the user.



Labeller HERMA 400 – versatile, variable and fully automatic

The modular system for economical labelling.



HERMA
Labelling Systems

HERMA GmbH
 Division Labelling Systems
 Ulmer Straße 300
 70327 Stuttgart – Germany
 Telephone +49 7 11 77 02-449
 Fax +49 7 11 77 02-428
 mail@herma.de
 www.herma.com

W 176.304

HERMA
Labelling Systems